

**York Central Infrastructure partner**

John Sisk & Son Ltd.  
York Central Project Office  
Leeman Rd York YO26 4XD  
United Kingdom

E: [YorkCentral@sisk.co.uk](mailto:YorkCentral@sisk.co.uk)  
W: [www.johnsiskandson.com/uk](http://www.johnsiskandson.com/uk)



Dear Residents,

I'm writing to let you know about an upcoming change to the Cinder Lane footpath/cycleway, the public right of way that runs along the Wilton Rise footbridge through to the Marble Arch Road tunnel. We need to temporarily divert this route to deliver the new infrastructure which we'll be delivering as part of the York Central development. We recognise that this is an extremely important route into the city for residents. Ensuring we maintain a route to the city is very important to us.

The Cinder Lane public foot path/cycleway, the commuter car parks, and the area previously used as Network Rail employee parking are all within the boundaries of the York Central project area. You may have noticed the upper commuter car park being progressively closed over the past year as works start in this area. We are now ready to start a new phase of our project which will includes works to the Cinder Lane foot path/cycleway area. It is this work which is driving the need for the temporary diversion.

**When is this change happening and where do I go?**

From Monday 31 October the existing Cinder Lane footpath/cycleway will be temporarily closed and pedestrians and cyclists will be redirected along a new temporary footpath and cycleway closer to the rear of York Railway station. This will run along the boundary of the new temporary car park. Coming from Wilton Rise, users will turn right towards the Network Rail ROC building, proceed along the boundary of the new temporary car park, cross onto the pedestrian footpath from the back of the station and down the steps to join the existing route towards the Marble Arch tunnel. We'll be erecting signs to direct pedestrians and cyclists along this new path, complete with lighting to ensure the safety of all users. See our map on the back of this letter.

**York Central infrastructure phase**

John Sisk & Son has been contracted by Homes England to deliver the infrastructure phase of the York Central project. This includes the construction of a new road junction off Water Lane leading to a bridge over the East Coast Main Line railway, a new pedestrian and cycle footbridge next to the current Severus bridge, a rail spur to the National Railway Museum, and two kilometres of road (with separated cycle and pedestrian paths) that will connect Water End through the site to Leeman Road.

[www.yorkcentral.info](http://www.yorkcentral.info)

York Central Partnership

Funding bodies



York Central

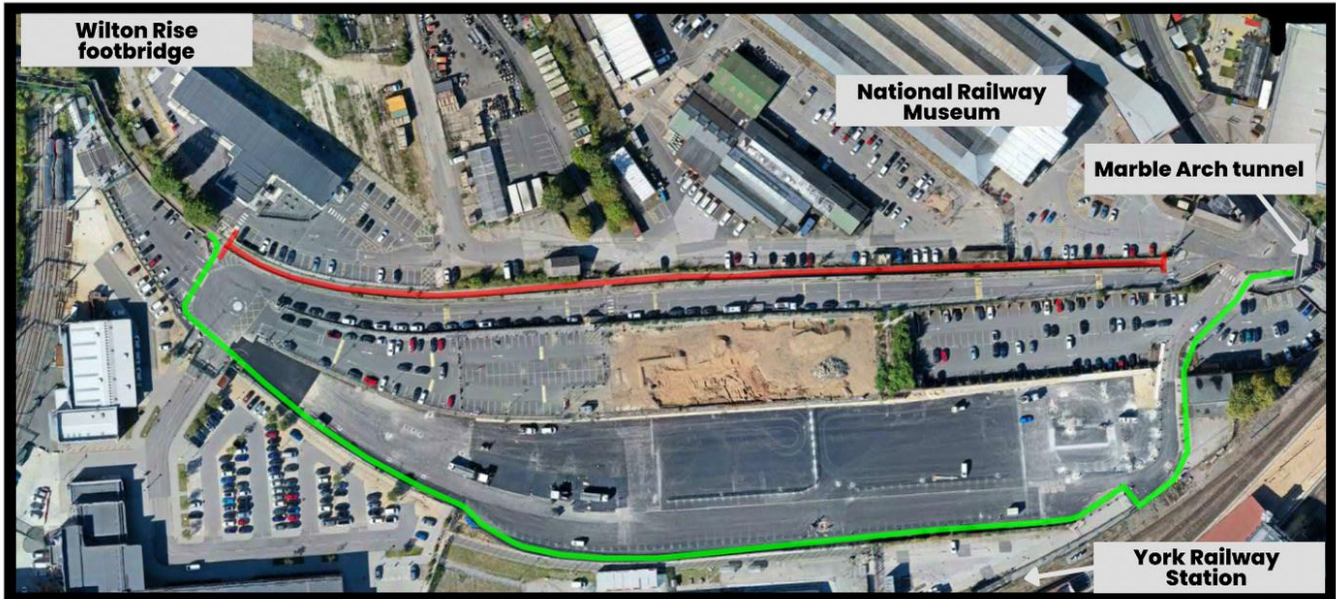


OFFICIAL

York Central Infrastructure partner

John Sisk & Son Ltd.  
York Central Project Office  
Leeman Rd York YO26 4XD  
United Kingdom

E: [YorkCentral@sisk.co.uk](mailto:YorkCentral@sisk.co.uk)  
W: [www.johnsiskandson.com/uk](http://www.johnsiskandson.com/uk)



-  Existing Cinder Lane footpath/cycleway
-  New public footpath/cycleway

### Our work

We're committed to minimising impact on residents and businesses as much as possible. For any work that will directly impact you we'll contact you by post. For more information on the project you can visit the York Central website, where you can also register for update emails: [www.yorkcentral.info/contact/](http://www.yorkcentral.info/contact/).

If you have any specific enquiries about work in your area or questions about the scheme, please contact us at the email address below, or write to the address at the top of this letter.

Kind regards,

**Amy Hoskin - Community Liaison Officer**

Email: [YorkCentral@sisk.co.uk](mailto:YorkCentral@sisk.co.uk)

John Sisk and Son, on behalf of Homes England

[www.yorkcentral.info](http://www.yorkcentral.info)

York Central Partnership

Funding bodies



OFFICIAL